



## Pellegrini Marine Crane GK7/26 & GK10/30

The MoD/RFA support vessel 'Diligence' needed to replace and up-grade obsolete time & duty expired cranes with the latest state of the art equipment.

Pellegrini were chosen as having both the pedigree and knowledge to design and build the cranes to the demanding specification of the RFA.

Duties GK10/30 10 Tonnes @ 30 Mtrs  
GK 7/26 7 Tonnes @ 26 Mtrs

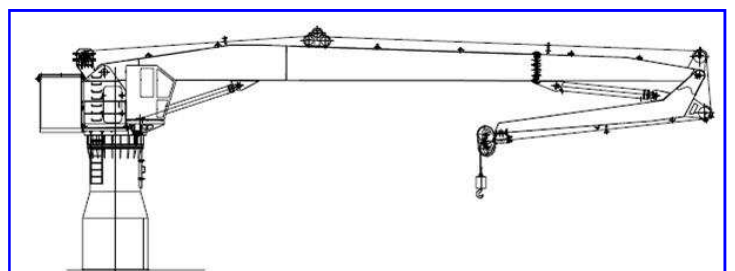
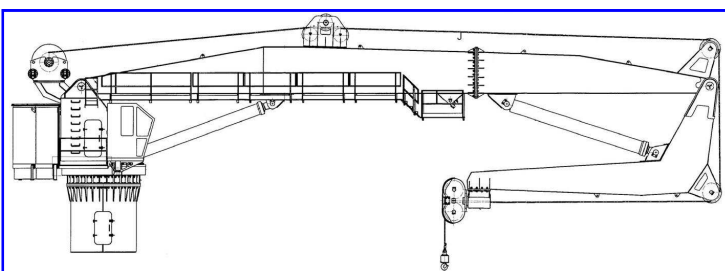
The cranes are computer controlled, sea-state calibrated with 'load on hook' & radius indication.

Cranes with integral power packs & pedestals were supplied to the yard ready to fit.

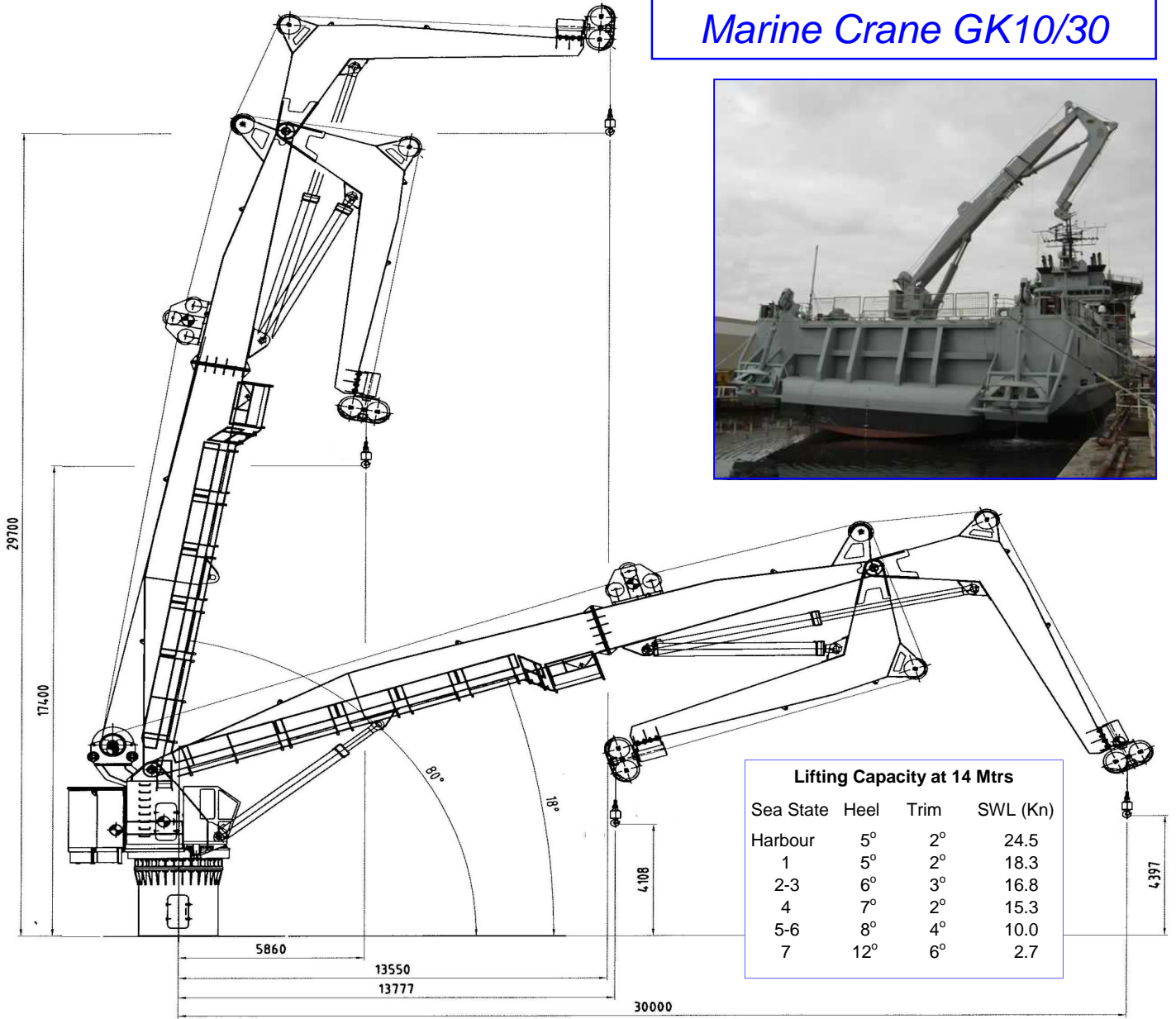
The cranes are now in service & performing well



Port Crane GK10/30  
Starboard Crane GK7/26



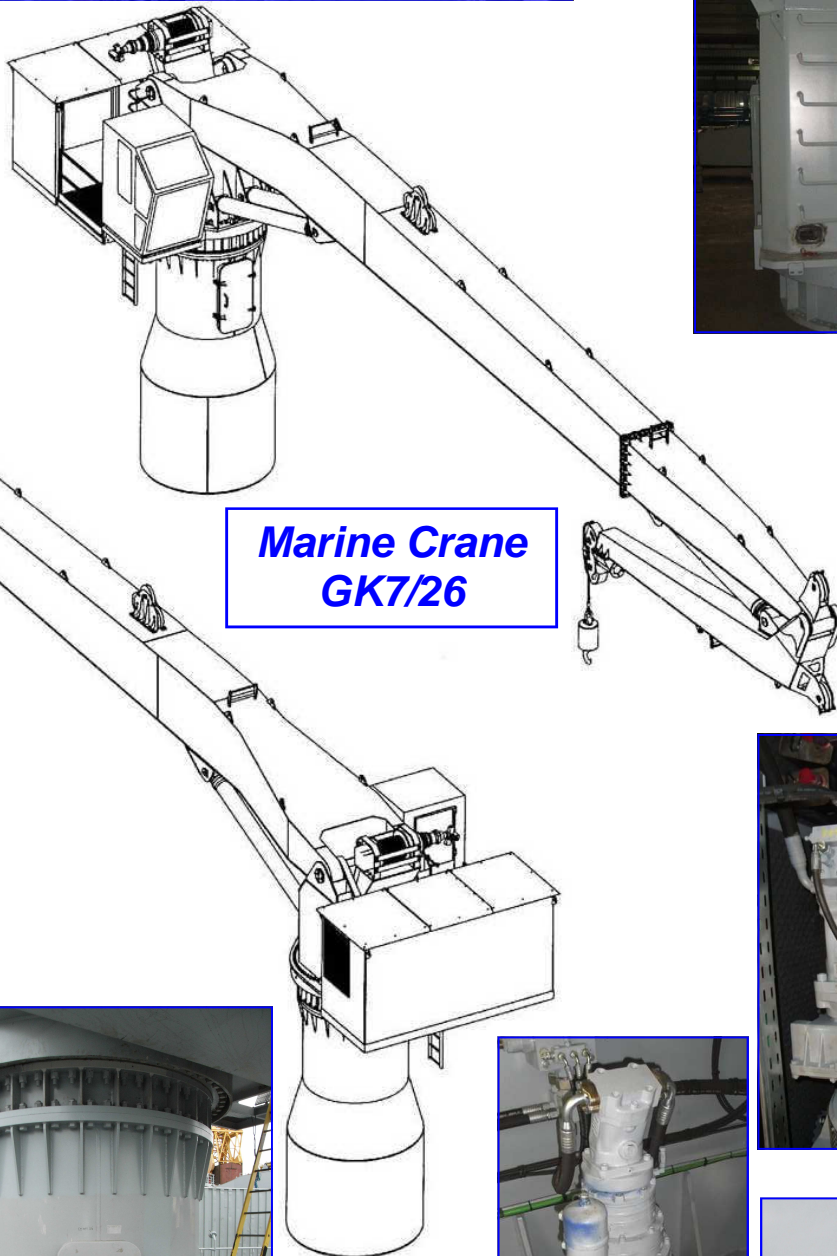
## Marine Crane GK10/30



### Pellegrini Cranes on RFA Diligence

|  | <u>Crane GK7/26</u>           | <u>Crane GK10/30</u> |
|--|-------------------------------|----------------------|
| Maximum Capacity                                   | 7T @ 26 Mtr<br>10T @ 30.0 Mtr | 40T @ 7.5 Mtr        |
| Minimum outreach                                   | 5.6 Mtr                       | 6.5 Mtr              |
| Slewing angle                                      | 360° continuous               | 360° continuous      |
| Hoist speed laden min.                             | max. 20 Mtr/min.              | max. 20 Mtr/min.     |
| Slewing speed                                      | 0 -1 rpm                      | 0 -1 rpm             |
| Hook stroke  | 55 Mtr                        | 60 Mtr               |
| Winch rope   | 90 Mtr                        | 100 Mtr              |
| Both cranes are capable of simultaneous operations |                               |                      |





**Marine Crane  
GK7/26**

